

REGISTER
NOW !



Double Storey Shop / Office Lots

Built-Up Area : 3,883 sqft

2 Storey + Basement

Near Highway & Ayer
Keroh Toll

Facing Main Road



22' x 70'

Developer:

TELADAN

TELADAN SETIA SDN BHD (261447-A)
Wisma Teladan,
Lot 13253, Jalan Batu Berendam,
75350 Batu Berendam, Melaka.

www.teladan.my

For any enquiry, please contact:

☎ 010-207 1111 ☎ 06-317 3236

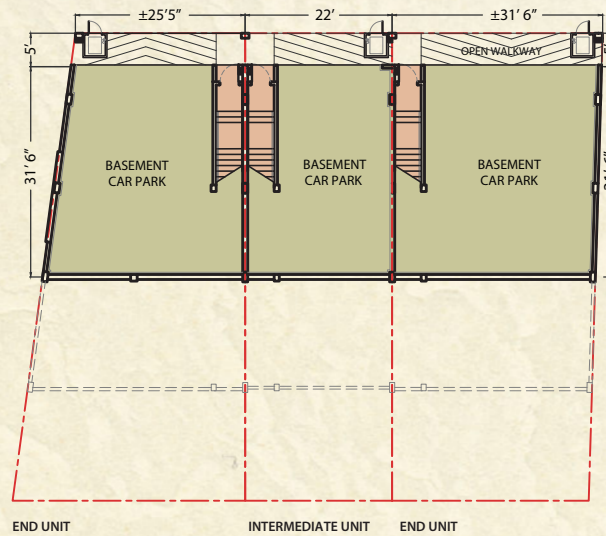
| | | | |
|--------|---------------|--------|---------------|
| MANDY | 011-1238 8511 | IKA | 016-215 8191 |
| ALFRED | 010-777 9282 | EILY | 011-2888 6678 |
| ANNA | 011-3331 1219 | NABIL | 018-367 4003 |
| SYADA | 017-688 5389 | ASYRAF | 011-3977 1727 |
| BOBO | 012-626 2130 | | |

Scan the QR Code
for location

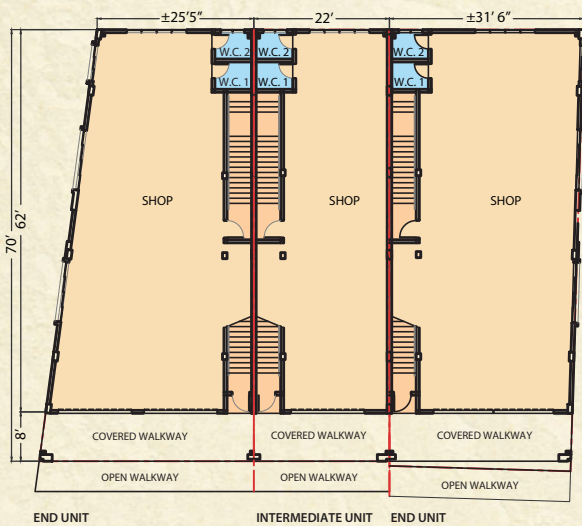


FLOOR PLANS

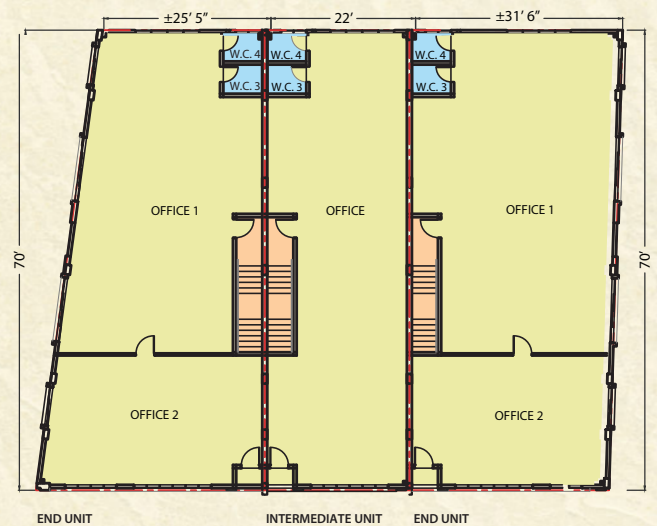
LOWER GROUND FLOOR



GROUND FLOOR



FIRST FLOOR



SPECIFICATION

| | |
|-------------|---|
| Structure | : Reinforced Concrete |
| Wall | : Cement Sandbrick or Brick or Concrete Wall |
| Roofing | : Metal Roof Sheet |
| Roof | : Metal Trusses |
| Structure | |
| Ceiling | : Internal - Skim Coat or Suspended Ceiling or Plaster Ceiling |
| Window | : Aluminium Frame Casement or Sliding Window or Top Hung or Fixed Glass |
| Door | : Main Door : Roller Shutter Washroom : PVC Door Others : Semi Solid Plywood Door or MS Grille Door or Flush Door |
| Ironmongery | : "Cylindrical Lockset" or "Lever Handle Lockset" |

| | | |
|-------------------------|--|------------------------|
| Flooring | : Washroom & Covered Walkway | - Tiles |
| | : Shop or Office, Staircase & Basement | - Cement Render |
| Wall Tiles | : Washroom | - Tiles to 1500mm high |
| Sanitary Installation | : Kitchen Sink | - 2 nos |
| | : Wash Basin | - 4 nos |
| | : Sitting WC | - 2 nos |
| | : Squatting WC | - 2 nos |
| Electrical Installation | : Lighting Point | - 29 nos |
| | : Fan Point | - 4 nos |
| | : Power Point | - 10 nos |
| Painting | : External - Weather Shield Paint | |
| | : Internal - Emulsion Paint | |